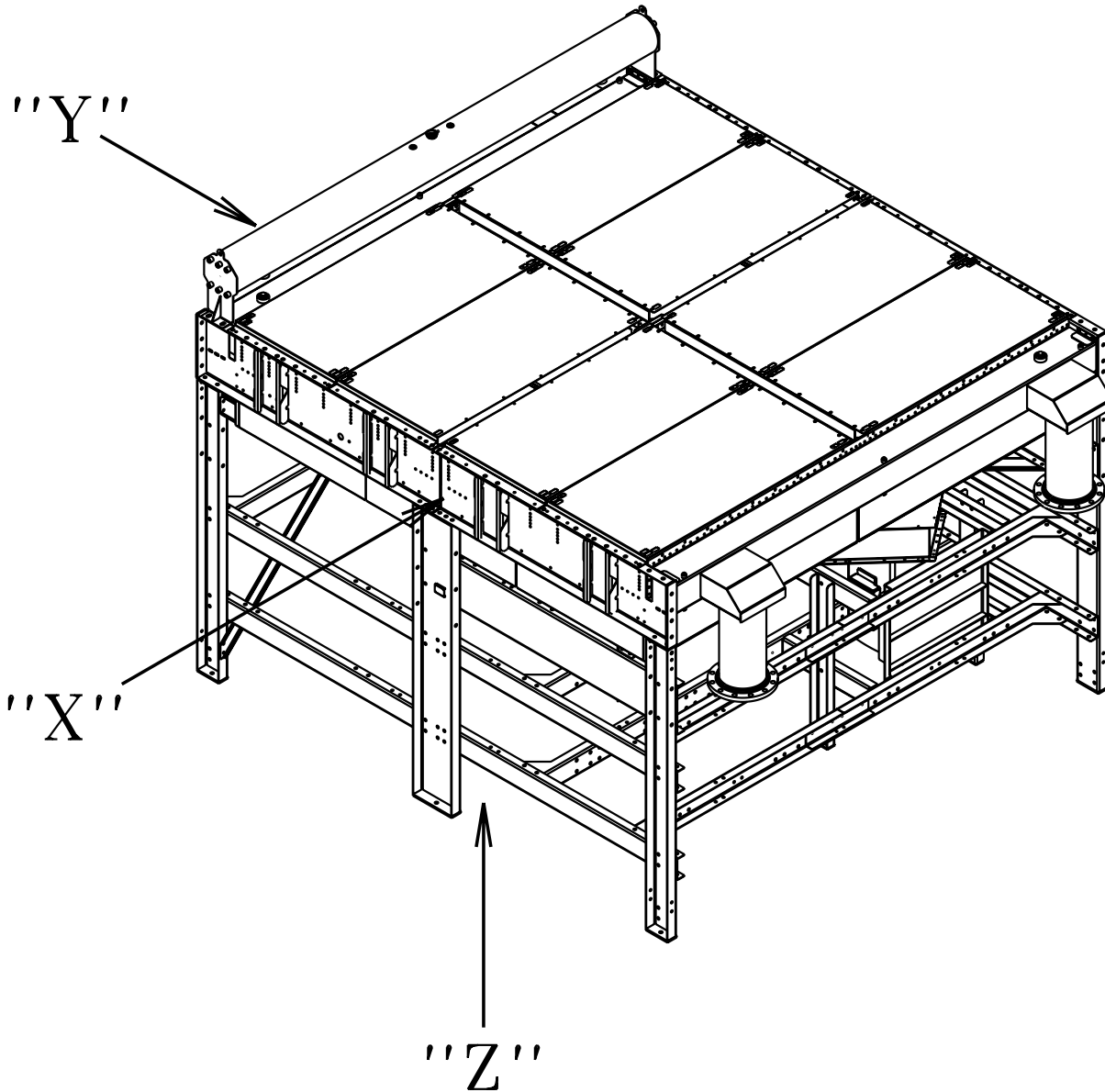


DS

MODEL HB
HORIZONTAL CORE/REMOTE MOUNT/MOTOR DRIVEN FAN/V-BELT DRIVE
SUBMITTAL/APPROVAL DRAWING - PAGE 1 OF 4



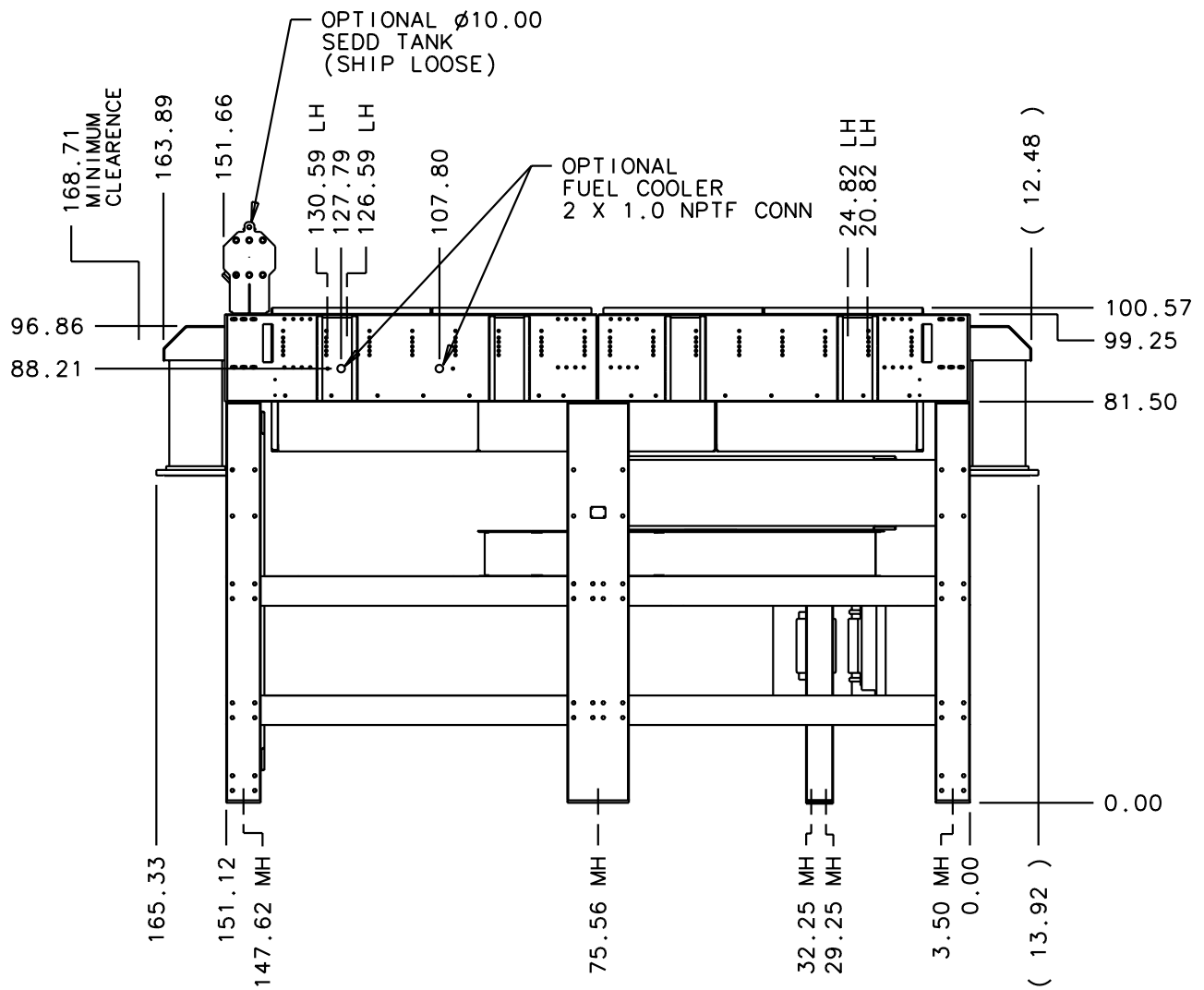
ISOMETRIC VIEW

ALL DIMENSIONS ARE SUBJECT TO CHANGE.

8/7/03

DS

SUBMITTAL/APPROVAL DRAWING - PAGE 2 OF 4



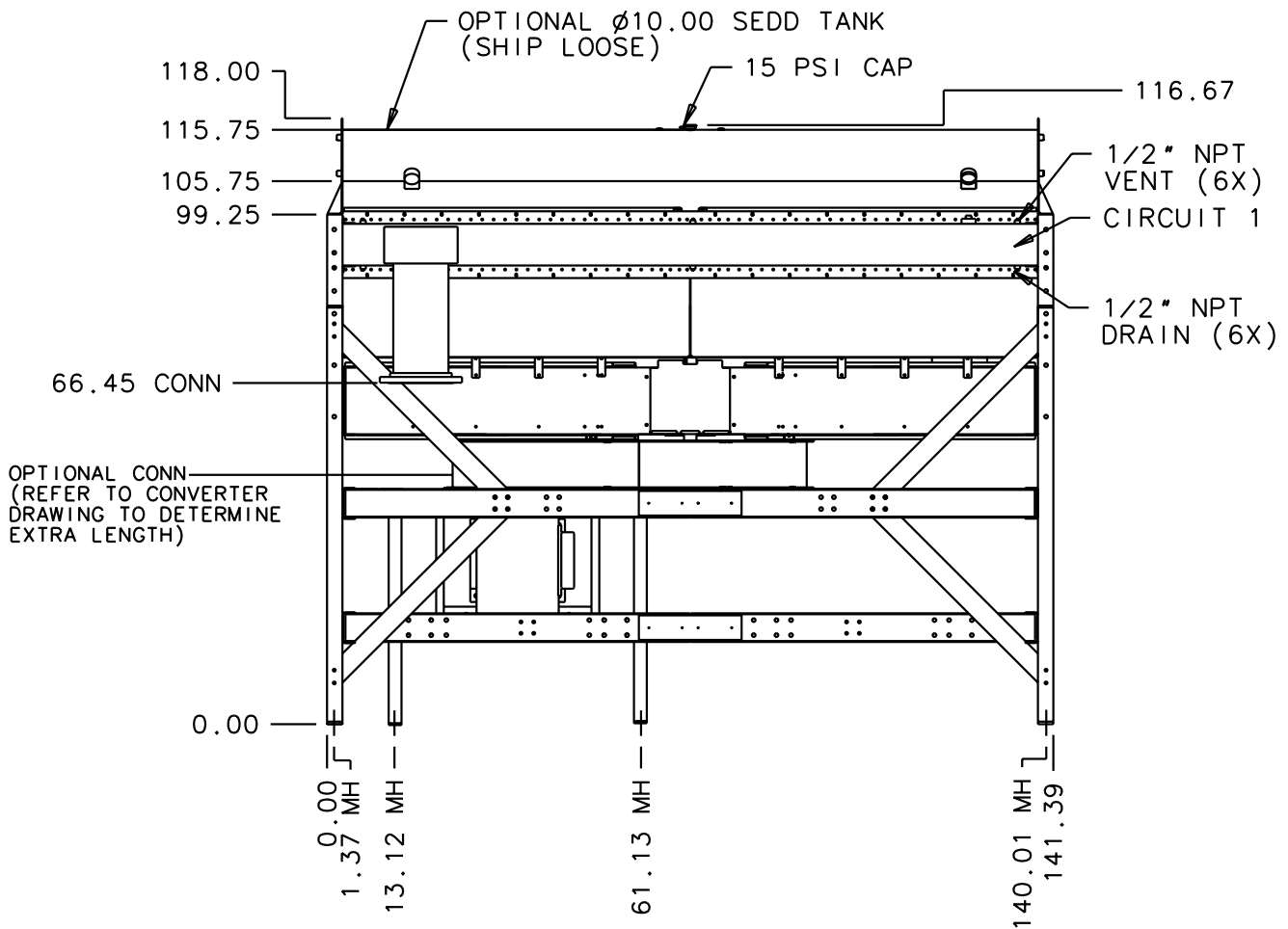
NOTE: $\phi 0.75$ MOUNTING HOLES (MH) IN 10 PLACES.
 $\phi 0.75$ LIFTING HOLES (LH) IN 8 PLACES.

"X" VIEW

ALL DIMENSIONS ARE SUBJECT TO CHANGE.

DS

SUBMITTAL/APPROVAL DRAWING - PAGE 3 OF 4



NOTE: $\phi 0.75$ MOUNTING HOLES (MH) IN 10 PLACES.

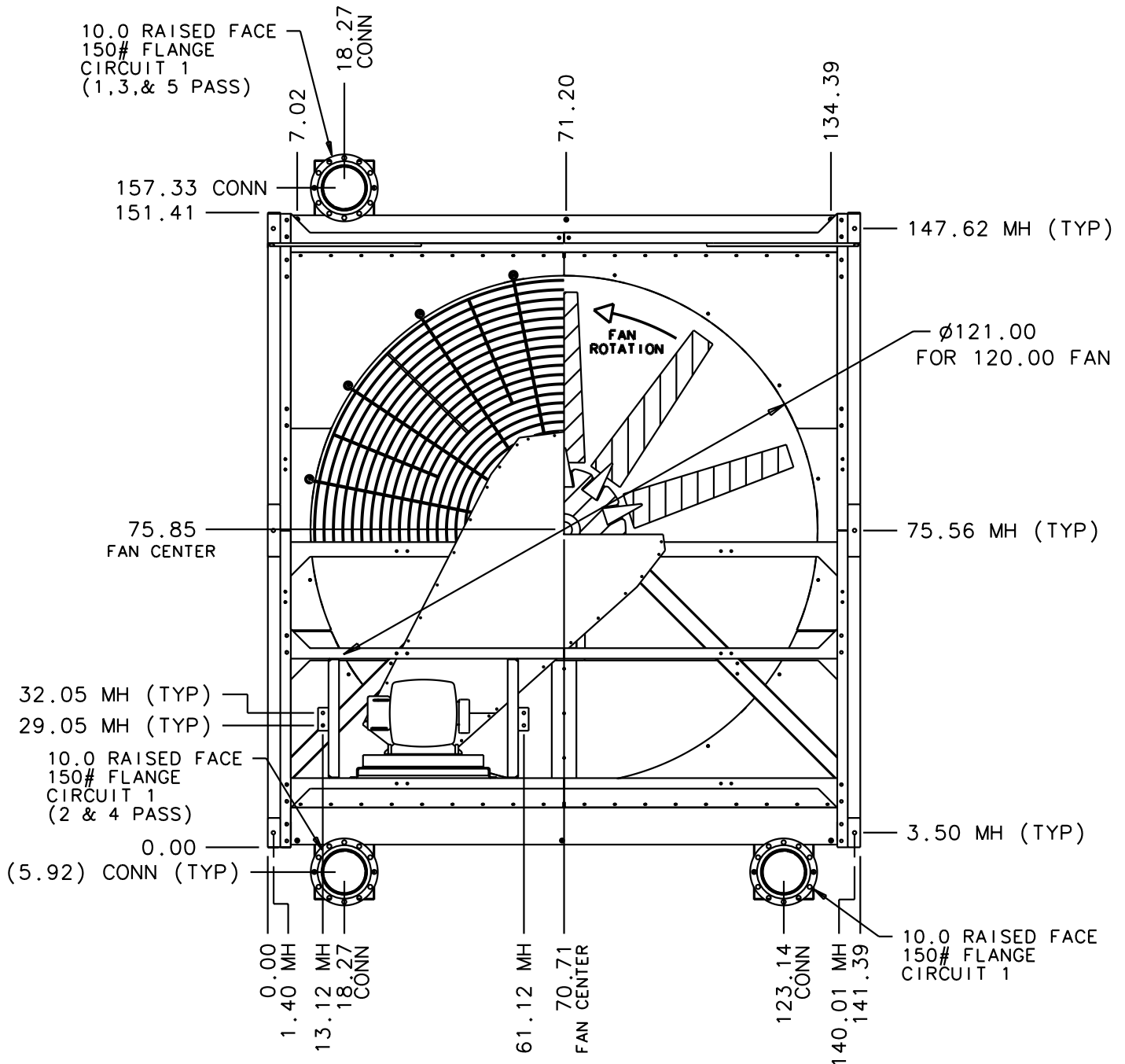
"Y" VIEW

ALL DIMENSIONS ARE SUBJECT TO CHANGE.

8/7/03

DS

SUBMITTAL/APPROVAL DRAWING - PAGE 4 OF 4



NOTE: $\phi 0.75$ MOUNTING HOLES (MH) IN 10 PLACES.

NOTE: REFER TO DS QUOTE OR SPEC SHEET TO DETERMINE CIRCUIT 1 PASS ARRANGEMENT.

ALL DIMENSIONS ARE SUBJECT TO CHANGE.

"Z" VIEW